

## LIGHTING SYMBOL LEGEND

SYMBOL	DESCRIPTION	MOUNTING
	LINEAR LED FIXTURE	SEE FIXTURE SCHEDULE
	2'x2' LED FIXTURE	SEE FIXTURE SCHEDULE
	LED DOWNLIGHT	SEE FIXTURE SCHEDULE
	WALL MOUNTED LINEAR LED FIXTURE	SEE FIXTURE SCHEDULE
	LED SCONCE FIXTURE	SEE FIXTURE SCHEDULE
	BATTERY POWERED EMERGENCY LIGHTING UNIT	SEE FIXTURE SCHEDULE
	EXIT LIGHT / 2 HEAD EMERGENCY LIGHT WITH BATTERY PACK, WALL MTD./CEILING MTD.	SEE FIXTURE SCHEDULE
	SINGLE POLE SWITCH (20 AMP)	FLUSH IN WALL M.H. 40" TO BOTTOM
	3-WAY SWITCH (20 AMP)	FLUSH IN WALL M.H. 40" TO BOTTOM
	WALL MOUNTED LINE VOLTAGE DIMMER AND DUAL-TECH OCCUPANCY SENSOR	FLUSH IN WALL M.H. 40" TO BOTTOM
	LOW VOLTAGE, LED DIMMER CONTROL. NUMBER DENOTES QUANTITY OF ZONES.	FLUSH IN WALL M.H. 40" TO BOTTOM
	LOW VOLTAGE SWITCH.	FLUSH IN WALL M.H. 40" TO BOTTOM
	WALL MOUNTED LINE VOLTAGE DUAL-TECH OCCUPANCY SENSOR (2) DENOTES 2-RELAY TYPE.	FLUSH IN WALL M.H. 40" TO BOTTOM
	20 MINUTE TWST-TIMER	FLUSH IN WALL M.H. 40" TO BOTTOM
	LOW VOLTAGE CEILING MOUNTED DIRECTIONAL OCCUPANCY SENSOR	CEILING SURFACE OR SUPPORTED AT OPEN CEILING LOCATIONS
	LINE VOLTAGE CEILING MOUNTED DIRECTIONAL OCCUPANCY SENSOR	BOX SURFACE
	DIGITAL OCCUPANCY SENSOR POWER PACK RELAY	SEE DETAIL ON SHEET E202
	DIGITAL OCCUPANCY SENSOR DIMMER POWER PACK RELAY	SEE DETAIL ON SHEET E202
	LOW VOLTAGE CABLE	SUPPORT EVERY 4FT ABOVE CEILING
	RACEWAY CONCEALED IN WALL OR CEILINGS	SEE GENERAL NOTES
	NIGHT LIGHT ON UNSWITCHED LEG OF LIGHTING CIRCUIT	
	BRAINLIT WIRELESS DUAL ROCKER TUNER, ILLUMRA BTT-S2A##.	FLUSH IN WALL M.H. 40" TO BOTTOM
	BRAINLIT TUNER CONTROLLER, LCB-22. ROUTE CAT 6 BACK TO DATA BACKBOARD AND CONNECT TO ENOCEN WIRELESS MODULE PTM-216B WITH TELNOKIA NETWORK CONTROLLER RUT951.	MOUNT ABOVE ACCESSIBLE CEILING
	BRAINLIT TOUCH SCREEN. ROUTE CAT 6 BACK TO DATA BACKBOARD AND CONNECT TO ENOCEN WIRELESS MODULE PTM-216B WITH TELNOKIA NETWORK CONTROLLER RUT951.	FLUSH IN WALL M.H. 40" TO BOTTOM
	ENOCENA WIRELESS SENSOR	CEILING SURFACE OR SUPPORTED AT OPEN CEILING LOCATIONS

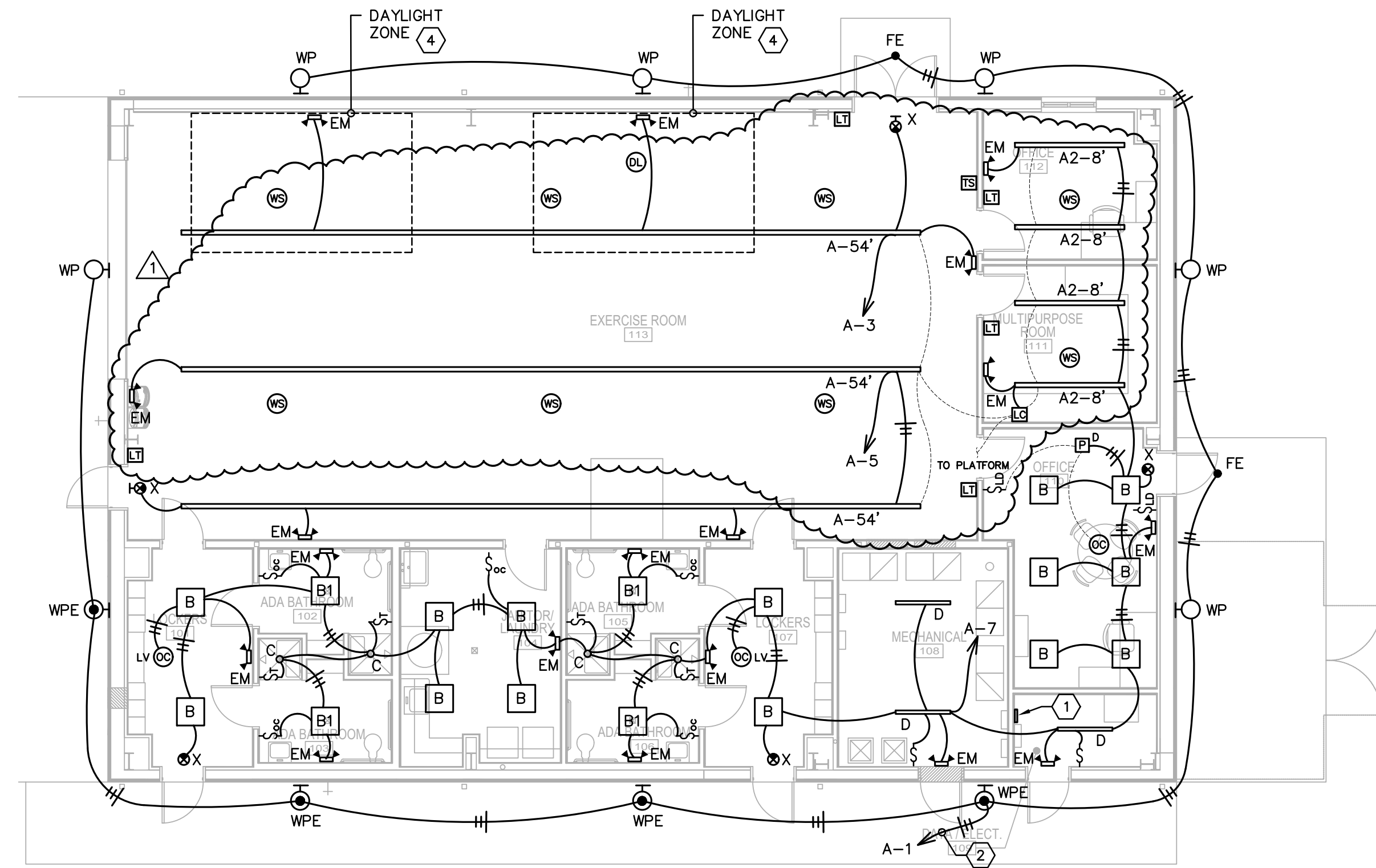
### GENERAL NOTES:

- CONNECT EMERGENCY LIGHTING BATTERY PACKS, NIGHT LIGHTS AND EXIT LIGHTS TO UNSWITCHED LEG OF LIGHTING CIRCUIT.
- ALL WALL MOUNTED OCCUPANCY SENSORS REQUIRE NEUTRAL WIRE CONNECTION.
- SWITCHES AND DIMMERS SHOWN SHALL OVERRIDE "OFF" OCCUPANCY SENSOR CONTROL.
- FUNCTIONAL TESTING SHALL BE EXECUTED BY THIRD PARTY ON ALL CONTROL HARDWARE AND SOFTWARE, PER FBC ENERGY CODE C408.3.1.
- SEE LIGHTING FIXTURE SCHEDULE SHEET E202.

### DRAWING NOTES:

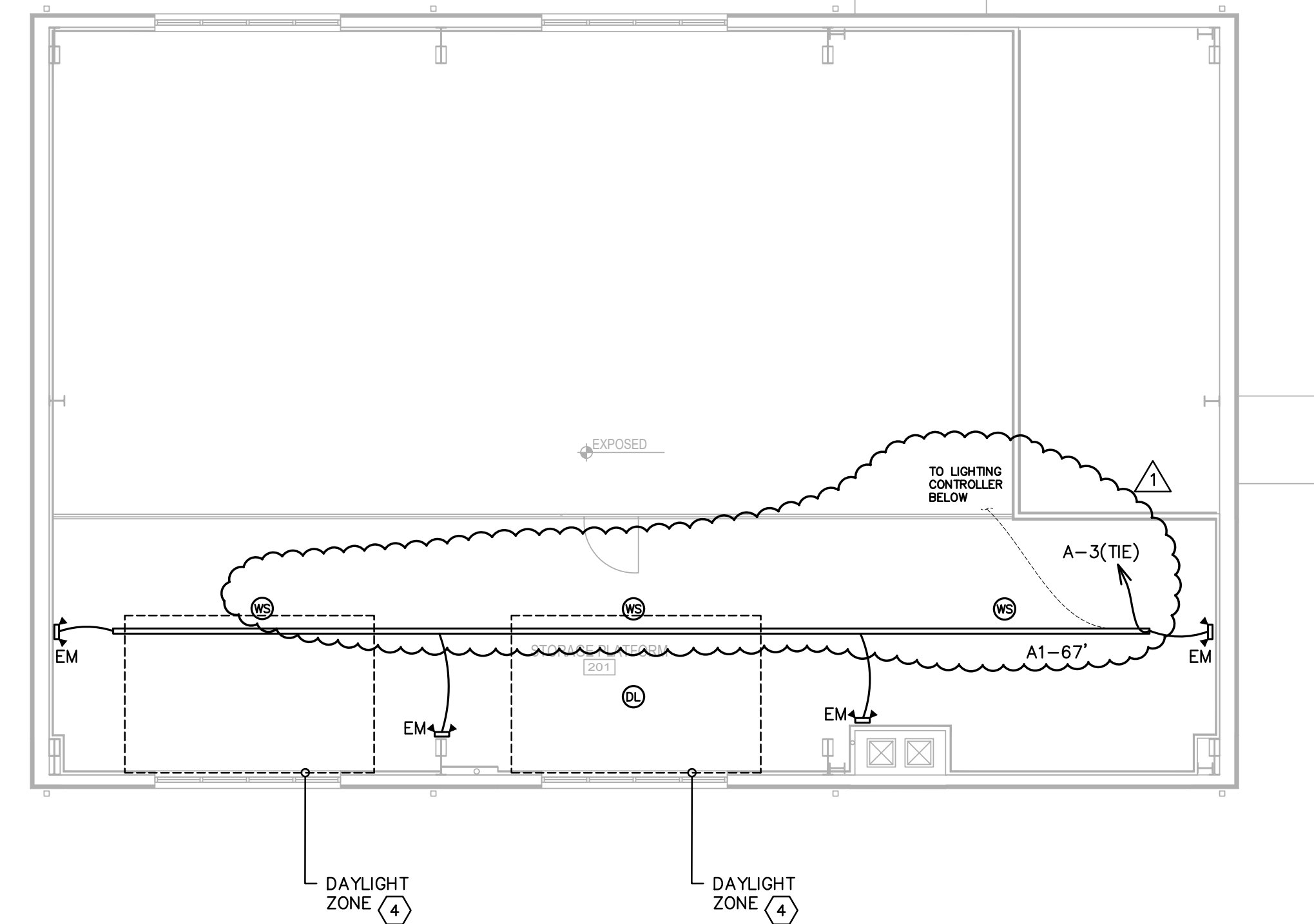
- 8 RELAY LIGHTING CONTROL PANEL. CONNECT TO LOCAL 120V. RECEPTACLE CIRCUIT FOR POWER.
- ROUTE CIRCUIT VIA EXISTING LIGHTING CONTROL PANEL.
- WATERPROOF TWIST TIMER SWITCH TO CONTROL SHOWER LIGHT.
- DAYLIGHTING CONTROLS SHALL AUTOMATICALLY REDUCE THE LIGHTING POWER IN RESPONSE TO THE AVAILABLE DAYLIGHT IN THE SPACE BY CONTINUOUSLY DIMMING THE LIGHTING FIXTURES IN THE DAYLIGHT ZONE.

TOTAL SQUARE FOOTAGE OF CEILING SPACE:	5,264 sf
TOTAL LIGHT FIXTURE WATTAGE:	2,743 W
WATTS/SF:	0.52 W/sf
FBC ALLOWANCE FOR BUILDING AREA - EXERCISE CENTER:	0.72 W/sf



### FIRST FLOOR LIGHTING PLAN

SCALE: 1/8" = 1'-0"



### STORAGE PLATFORM LIGHTING PLAN

SCALE: 1/8" = 1'-0"

#### LIGHTING FIXTURES:

- THE CONTRACTOR SHALL FURNISH AND INSTALL COMPLETE IN ALL RESPECTS ALL LIGHTING FIXTURES LISTED IN THE FIXTURE SCHEDULE.
- THE CONTRACTOR SHALL SUBMIT CATALOG CUTS OF ALL THE FIXTURES TO THE ARCHITECT. THESE CUTS SHALL BE SUBMITTED IMMEDIATELY AFTER THE CONTRACTOR HAS RECEIVED AN APPROVED MATERIAL LIST FROM THE ARCHITECT.
- LED FIXTURES SHALL HAVE 3500K COLOR TEMP.
- LED DRIVERS SHALL COMPLY WITH UL STANDARD UL1012 AND SHALL HAVE CLASS A SOUND RATING.
- ALL FIXTURES SHALL BE PROPERLY AND CAREFULLY SUPPORTED AND ALIGNED, AND THE CONTRACTOR SHALL FURNISH AND INSTALL ALL NECESSARY STEEL SHAPES, ETC., FOR SUPPORT OF FIXTURES AS REQUIRED AND DETAILED ON THE DRAWINGS. PROVIDE JUNCTION BOX STEM MOUNTED FROM DECK TO SUPPORT ALL CEILING MOUNTED EXIT LIGHTS.
- COORDINATE ALL LOCATIONS OF LIGHTING FIXTURES WITH ARCHITECTURAL DRAWINGS.

#### LIGHTING CONTROL:

- FUNCTIONAL TESTING SHALL BE EXECUTED BY MANUFACTURER ON ALL CONTROL HARDWARE AND SOFTWARE, PER FBC ENERGY CODE C408.3.1. PRIOR TO PASSING THE FINAL INSPECTION, A FUNCTIONAL TEST OF THE LIGHTING CONTROL SYSTEM IS REQUIRED TO SHOW THAT THE LIGHTING CONTROL SYSTEMS HAVE BEEN TESTED TO ENSURE THAT CONTROL HARDWARE AND SOFTWARE ARE CALIBRATED, ADJUSTED, PROGRAMMED AND IN PROPER WORKING CONDITION IN ACCORDANCE WITH THE CONSTRUCTION DOCUMENTS AND MANUFACTURER'S INSTRUCTIONS PER FBC ENERGY CONSERVATION CHAPTER 4 SECTION C408.3.1. ALL REPORTS SHALL BE SUBMITTED TO ENGINEER FOR REVIEW.
- DOCUMENTS CERTIFYING THAT THE INSTALLED LIGHTING CONTROLS MEET DOCUMENTED PERFORMANCE CRITERIA OF SECTION C405 ARE TO BE PROVIDED TO THE BUILDING OWNER WITHIN 90 DAYS FROM THE DATE OF RECEIPT OF THE CERTIFICATE OF OCCUPANCY PER FBC ENERGY CODE C408.3.2.
- CONTRACTOR SHALL SUBMIT SHOP DRAWINGS SHOWING LOCATIONS OF ALL UNITS AND CUT SHEETS FOR ALL DEVICES.
- WALL MOUNTED OCCUPANCY SENSOR/CONTROL BUTTON UNITS SHALL BE PROGRAMMED FOR MANUAL "ON" BY BUTTON ONLY, AUTOMATIC OFF BY OCCUPANCY SENSOR WITHIN 20 MINUTES OF OCCUPANT LEAVING SPACE. BUTTON SHALL ALSO OVERRIDE LIGHTS "OFF".
- SUPPLY/INSTALL NETWORK TIMECLOCK TO CONNECT TO ALL DIMMER RELAYS SHOWN. TIMECLOCK FUNCTIONS SHALL COMPLY WITH FBC ENERGY CONSERVATION SECTION C405.2.2.1. PROVIDE/INSTALL ALL NECESSARY NETWORK WIRING, POWER, LOW VOLTAGE CABLING, ETC. TO SUPPORT SYSTEM.

**Furr,  
Wegman &  
Banks**  
Architects, P.A. A098865

625 EAST ORANGE ST.  
LAKELAND, FL 33801  
E-MAIL: INFO@FWBARCHITECTS.COM  
WWW.FWBARCHITECTS.COM  
PH: 863.688.1211

100% CONSTRUCTION DOCUMENTS  
THE DESIGN AND CONCEPTS SHOWN HEREIN ARE THE SOLE PROPERTY OF FURR, WEGMAN & BANKS ARCHITECTS, P.A. NO REPRODUCTION, EITHER IN WHOLE OR IN PART, OR ANY PART THEREOF, IS PERMITTED WITHOUT THE WRITTEN PERMISSION OF FURR, WEGMAN & BANKS ARCHITECTS, P.A.

NOT FOR CONSTRUCTION

DATE	REVISION DESCRIPTION - THIS SHEET ONLY
03/31/2025	ADDENDUM NO. 2
1	
2	
3	
4	
5	
6	
7	

**FIRST FLOOR & STORAGE PLATFORM LIGHTING PLAN**  
**PASCO SHERIFF'S OFFICE**  
**MENTAL PHYSICAL EMOTIONAL HEALTH CENTER**  
 CENTRAL BLVD., BUILDING E  
 LAND O' LAKES, FL 34657  
 DATE: 09/17/2025  
 PHASE: 100% CONSTRUCTION DOCUMENTS

PROJ MGR: DTN CKD BY: DJN

JOB NUMBER: 25-14

SHEET NUMBER: E201



ORDERING INFORMATION			
Light RELAY PANEL		Example: ARP INTENC08 NLT 8FCR MVOLT SC 5M	
Panel Size	Relay Quantity	Operating Voltage	
ARP INTENC08 NLT 8-Relay Enclosure	4FCR 4-Field Configurable Relays	16FCR 16-Field Configurable Relays	MVOLT 120-277VAC
ARP INTENC16 NLT 16-Relay Enclosure	8FCR 8-Field Configurable Relays	24FCR 24-Field Configurable Relays	CNDV 120-277, 347VAC
ARP INTENC32 NLT 32-Relay Enclosure	12FCR 12-Field Configurable Relays	32FCR 32-Field Configurable Relays	
ARP INTENC48 NLT 48-Relay Enclosure	16FCR 16-Field Configurable Relays	48FCR 48-Field Configurable Relays	
Voltage Barrier	Door Type	Mounting	Clock Option
(blank) No barriers	SC Screw Cover	SM <sup>2</sup> Surface Mount	(blank) No Clock
1VB 1 Voltage Barrier	HLK <sup>2</sup> Hinge Locking	FM Flush Mount	DTC Digital Time Clock
2VB 2 Voltage Barriers			
3VB 3 Voltage Barriers			
4VB 4 Voltage Barriers			

NOTE: If desired, panel enclosure and interior components can be ordered separately. Typically for panel enclosure rough-in prior to final wiring and system programming. Contact your Acuity representative for ordering tree information.

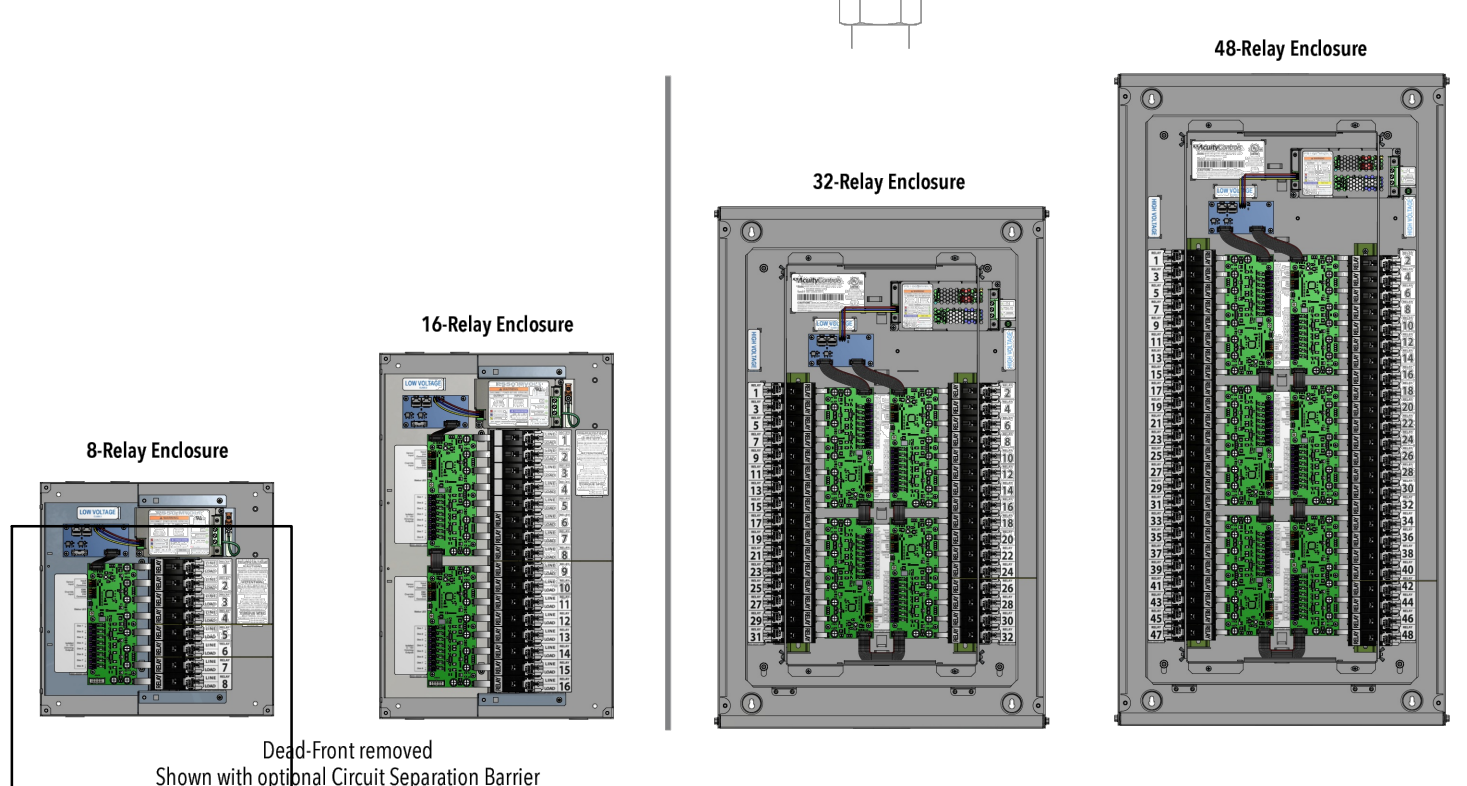
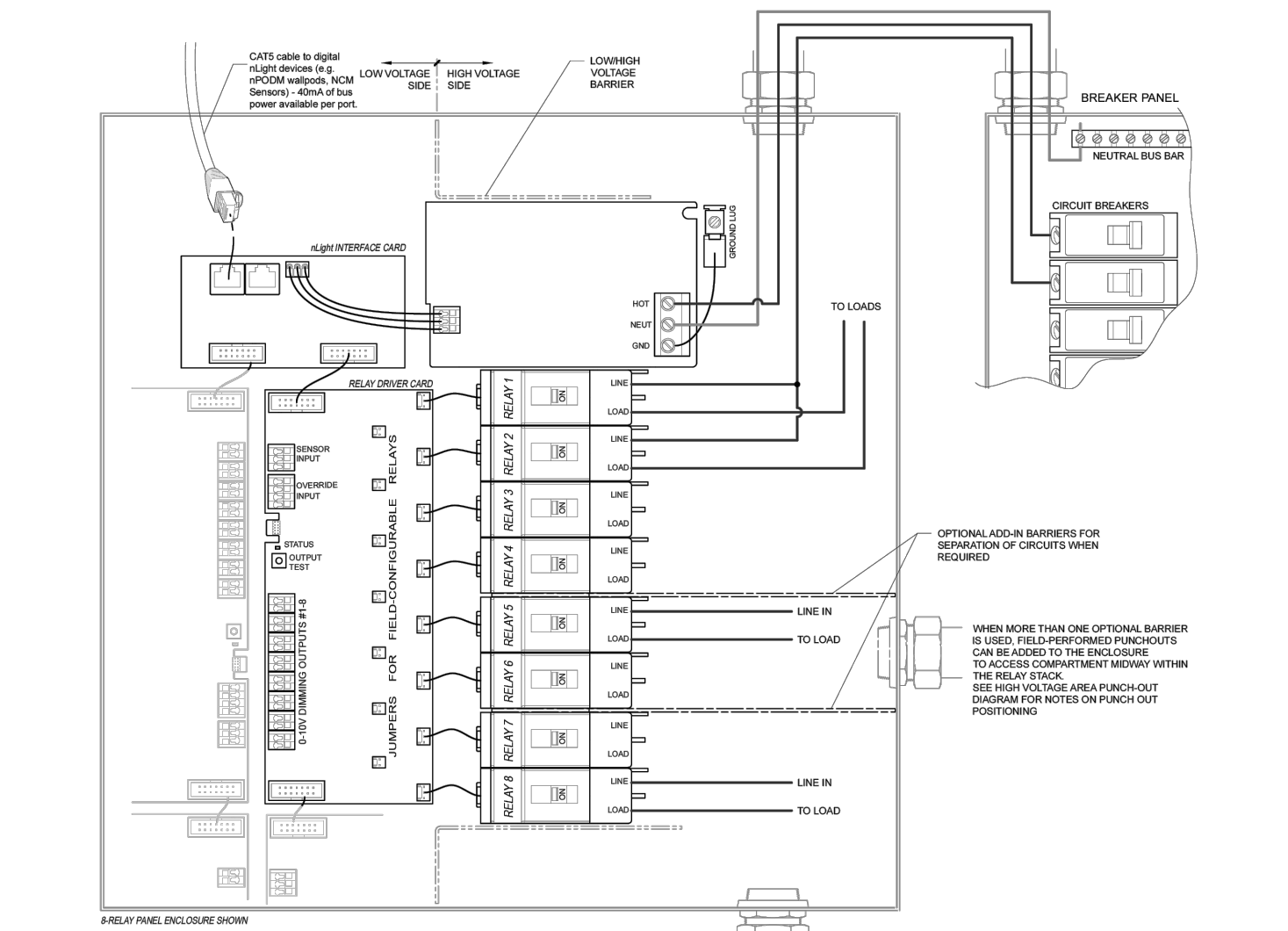
1. Only available in 8-Relay Enclosure.
2. Only available in 16-Relay Enclosure.
3. Only available in 32-Relay Enclosure.
4. Only available in 48-Relay Enclosure.
5. Only available in 32 or 48-Relay Enclosure Options.
6. 32/48 Enclosures only available in hinge locking surface mount.

Photosensor Accessories: Order as separate catalog number.		
Series	Description	Recommended Application
ARPA PC	Simple switching (at ~1.3k) with mechanically adjustable slide	Outdoor dusk to dawn, On/Off only
ARPA APS OL	Analog sensor (0-100FC) with switching/dimming thresholds remotely adjustable (via SensorView)	Outdoor dusk to dawn lighting, On/Off or On/Off/Dimming (where necessary)

Additional Accessories: Order as separate catalog number.	
Series	Description
ARP DTC BRKT	Hardware to field install nDTC into nLight relay panel (ARP). nDTC ordered separately
ARP FCR CONFIG HARDWARE BAG	Extra set of hardware to create 2 and 3-pole relays in the field (2x 2-pole relays, 1x 3-pole relay)
ARPA FCR40	Replacement FCR40 Relay
ARP BARRIER REPLACEMENT KIT	Additional voltage barrier for 48/12/16 relay panels
ARP32-48 VOLTAGE BARRIER	Additional voltage barrier for 24/32/48 relay panels

Acuity Brands | One Lithonia Way, Conyers, GA 30012 | Phone: 800.535.2465 | www.acuitycontrols.com  
 © 2016-2024 Acuity Brands Lighting, Inc. All rights reserved. Rev. 02/26/24 ARP 2 of 5

**WIRING - SINGLE-POLE**



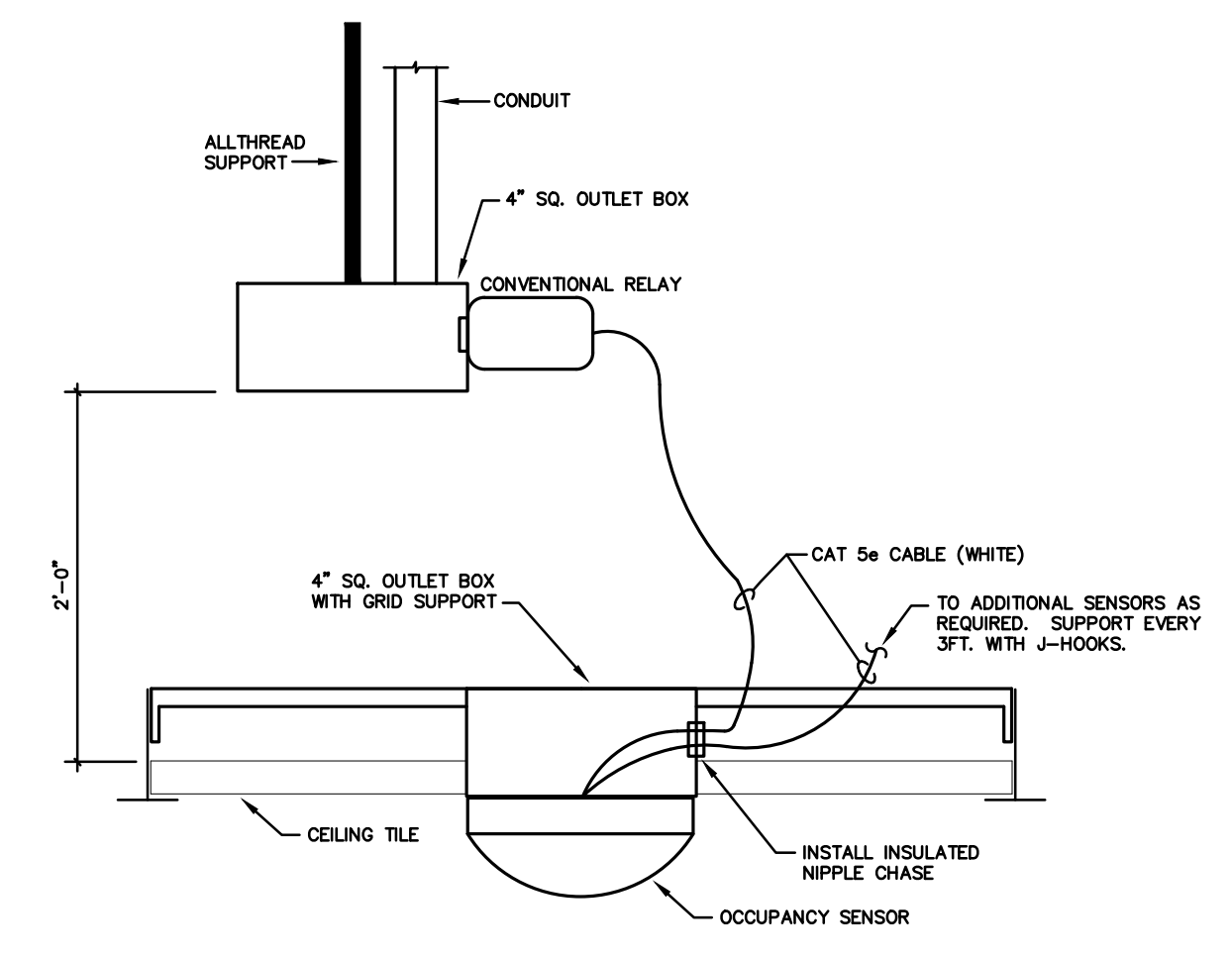
Acuity Brands | One Lithonia Way, Conyers, GA 30012 | Phone: 800.535.2465 | www.acuitycontrols.com  
 © 2016-2024 Acuity Brands Lighting, Inc. All rights reserved. Rev. 02/26/24 ARP 3 of 5

**LIGHTING CONTROL PANEL**

**LIGHTING FIXTURE SCHEDULE**

TYPE	PICTURE & LINK <small>CLICK ON IMAGE FOR INFO</small>	MANUFACTURER	CATALOG NUMBER	LAMPS	MOUNTING	DESCRIPTION	INPUT WATTS (VA)
A-54'		3G LIGHTING	3G-4PLI-DI-TW-D1000-L250-H90-UNV-DALI-FL-60"-1C-S ROW - LENGTH AS SHOWN	80CRI/2700K-6500K	SUSPEND 22" AFF	54FT, 3.5" APERTURE INDIRECT/DIRECT, TUNABLE WHITE, 60,000 HOUR L90 RATED LIFE, 5 YEAR WARRANTY	9/FT
A1-67'		3G LIGHTING	3G-4PLI-DI-TW-D1000-L250-H90-UNV-DALI-FL-60"-1C-S ROW - LENGTH AS SHOWN	80CRI/2700K-6500K	SUSPEND 8" AFF	67FT, 3.5" APERTURE INDIRECT/DIRECT, TUNABLE WHITE, 60,000 HOUR L90 RATED LIFE, 5 YEAR WARRANTY	9/FT
A2-8'		3G LIGHTING	3G 4PLI DI 500L DIR 500L IND DMX S80 TW UNV DALI FL FL XX 60" 1SC S8, LENGTH AS SHOWN	80CRI/3500K	SUSPEND 8" AFF	8FT, 3.5" APERTURE INDIRECT/DIRECT, 60,000 HOUR L90 RATED LIFE, 5 YEAR WARRANTY	5/FT
B		LITHONIA	CPX 22 AL07 80CRI SWW7 SWL MVOLT	80CRI/SET TO 3500K	RECESSED	2X2 FLAT PANEL, SET TO 4000 LUMENS, 60,000 HOUR L80 RATED LIFE, 5 YEAR WARRANTY	35
B1		LITHONIA	CPX 22 AL07 80CRI SWW7 SWL MVOLT-DWF22	80CRI/SET TO 3500K	RECESSED	2X2 FLAT PANEL, SET TO 4000 LUMENS, 60,000 HOUR L80 RATED LIFE, 5 YEAR WARRANTY, DRYWALL FRAMING KIT	35
C		TRULY GREEN SOLUTIONS	DDR 0410 5CCT	90CRI/SET TO 2700K	SURFACE	4" DISK LIGHT, WET LOCATION, NON CONDUCTIVE/DEAD FRONT, 625 LUMENS, 50,000 HOUR L70 RATED LIFE, 5 YEAR WARRANTY	10
D		HE WILLIAMS	FS4 8CS DIM UNV	80CRI/SET TO 3500K	SURFACE	4" STRIP, SET TO MEDIUM OUTPUT 4800 LUMENS, 70,000 HOUR L70 RATED LIFE, 5 YEAR WARRANTY	40
EM		BEGHELLI	BBX SE WH HO	NA	SURFACE WALL 7'-6" AFF	EMERGENCY UNIT EQUIPMENT, 2 HEAD FULLY ADJUSTABLE 600 LUMENS/HEAD, WHITE THERMOPLASTIC HOUSING	6
FE		HE WILLIAMS	DR TL L20 835 DIM UNV OM OF CS WET/CC N F1 EM10W IPRTS	80CRI/3500K	RECESSED	4" DOWNLIGHT, 2000 LUMENS, WET LOCATION LISTED FOR COVERED CEILING, 10W EM BATTERY, 55,000 HOUR L70 RATED LIFE, 5 YEAR WARRANTY	20
X		LITHONIA	EDGR XX EL XX XX	NA	RECESSED	EXIT, EDGE LIT, GREEN LETTERS, RECESSED, SINGLE FACE, BATTERY BACK UP	3
WP		HE WILLIAMS	VWPV L60 840 TFT BLK DIM UNV	80CRI/4000K		MOUNT 8'-0" AFG. COORDINATE FINAL LOCATION WITH ARCHITECT.	49
WPE		HE WILLIAMS	VWPV L60 840 TFT BLK DIM UNV -EM	80CRI/4000K		MOUNT 8'-0" AFG. COORDINATE FINAL LOCATION WITH ARCHITECT.	49

Contact Cheril Santore at [csantore@sescolighting.com](mailto:csantore@sescolighting.com) for pricing.



**OCUPANCY SENSOR CEILING MOUNT DETAIL**  
NOT TO SCALE

**OCUPANCY SENSOR SETTING NOTE:**

1. ALL SENSORS IN EGRESS AREAS SHALL BE SET AT 20 MINUTES. COORDINATE REMAINING SENSOR SETTINGS WITH FACILITIES MANAGER.
2. CONTRACTOR TO SUBMIT MANUFACTURER'S SHOP DRAWINGS (1/8" SCALE) SHOWING DEVICES LOCATIONS AND DESCRIPTIONS.



**Furr, Wegman & Banks**  
Architects, P.A. AR96865

625 EAST ORANGE ST.  
LAKELAND, FL 33801  
E-MAIL: [INFO@FWBARCHITECTS.COM](mailto:INFO@FWBARCHITECTS.COM)  
[WWW.FWBARCHITECTS.COM](http://WWW.FWBARCHITECTS.COM)  
PH: 863.688.1211

FOR WEIGHTED POINTS ONLY  
 FURR, WEGMAN & BANKS ARCHITECTS, P.A.  
 THE DESIGN AND CONCEPTS INDICATED HEREIN ARE THE SOLE PROPERTY OF FURR, WEGMAN & BANKS ARCHITECTS, P.A. NO REPRODUCTION, REVISION OR USE OF THE DRAWING IS AUTHORIZED WITHOUT WRITTEN PERMISSION. ALL RIGHTS RESERVED.

**NOT FOR CONSTRUCTION**

DATE	REVISION DESCRIPTION - THIS SHEET ONLY
03/31/26	ADDENDUM NO. 2
1	
2	
3	
4	
5	
6	
7	

**LIGHTING SCHEDULE AND LEGEND**  
**PASCO SHERIFF'S OFFICE**  
**MENTAL PHYSICAL EMOTIONAL HEALTH CENTER**  
 CENTRAL BLVD., BUILDING E  
 LAND O' LAKES, FL 34657  
 PHASE: 100% CONSTRUCTION DOCUMENTS  
 DATE: 09/17/2025

PROJ MGR: DTN  
 CKD BY: DJN  
 JOB NUMBER: 25-14  
 SHEET NUMBER: E202