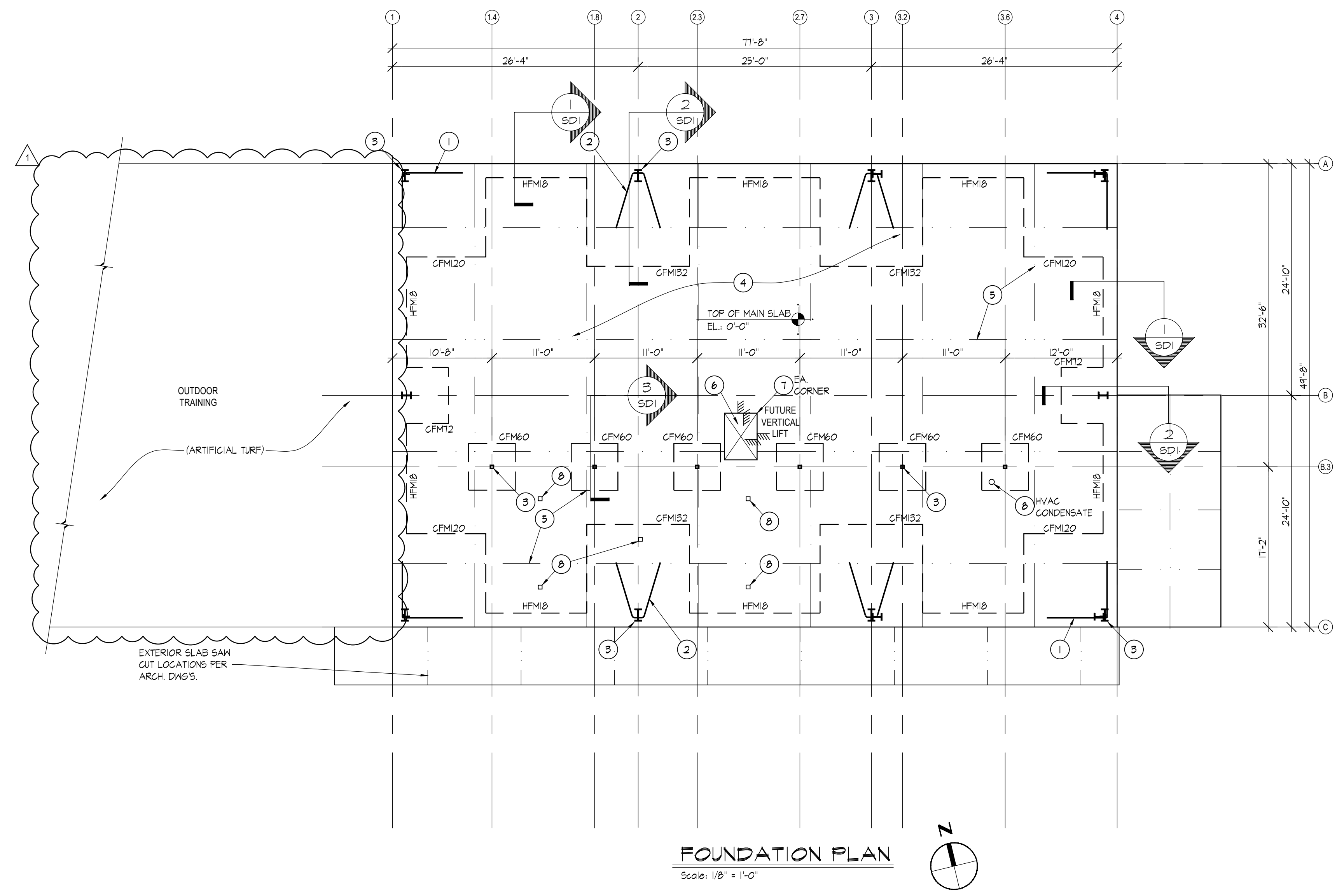


FOUNDATION PLAN KEY NOTES AND LEGEND:

- HFMMX = INDICATES CONTINUOUS HAUNCH FOOTING. SEE SPREAD FOOTING SCHEDULE ON SHEET SDI FOR SIZE & REINFORCING.
- CFMXX = INDICATES SPREAD HAUNCH FOOTING. SEE SPREAD FOOTING SCHEDULE ON SHT. SDI FOR SIZE & REINFORCING.
- ① = SEE TYPICAL HAIRPIN AT CORNER COLUMN ON SHEET SDI.
- ② = SEE TYPICAL HAIRPIN AT EXTERIOR COLUMN ON SHEET SDI.
- ③ = INDICATES PRE-ENGINEERED METAL BUILDING COLUMN.
- ④ = CONCRETE SLAB THICKNESS = 4" W/ 6x6 W2.1XW2.1 WELDED WIRE MESH. (TYP. UNO.) REFER TO SHEET SN-1 FOR REQUIREMENTS.
- ⑤ = INDICATES SAW CUT CONTROL JOINTS. (REFER TO DETAIL ON SHEET SDI & NOTE ON SHEET SN-1 FOR MAX. SPACING).
- ⑥ = 3" RECESS IN SLAB FOR FUTURE VERTICAL LIFT TO STORAGE PLATFORM. FILL FLUSH GYPCRETE. REFER TO ARCH. DWGS FOR SIZE & LOCATION.
- ⑦ = REFER TO DETAIL CRACK CONTROL STEEL AT REENTERANT CORNERS OF SLAB AT GRADE AND ELEVATED FLOORS ON SHEET SDI (TYP. UNO. AT ALL CORNERS).
- ⑧ = FLOOR DRAIN. REFER TO ARCH. & MEP DWGS FOR LOCATION AND DETAILS.



FOUNDATION PLAN
Scale: 1/8" = 1'-0"

DIMENSIONING FOR BUILDING LAYOUT:

NOTE: THE MAJORITY OF THE PLAN DIMENSIONING IS PROVIDED ON THE ARCHITECTURAL DRAWINGS. USE BOTH STRUCTURAL AND ARCHITECTURAL DRAWINGS TOGETHER FOR BASIC LAYOUT AND CONSTRUCTION OF THIS PROJECT. ANY OBSERVED DISCREPANCIES BETWEEN ARCHITECTURAL DRAWING DIMENSIONING AND STRUCTURAL DRAWING SCALE LAYOUT SHOULD BE BROUGHT TO THE ATTENTION OF THE ARCHITECT IMMEDIATELY UPON DISCOVERY.

Furr, Wegman & Banks
Architects, P.A. AR96865

625 EAST ORANGE ST.
LAKELAND, FL 33801

E-MAIL: INFO@FWBARCHITECTS.COM
WWW.FWBARCHITECTS.COM

PH: 863.688.1211

THIS DESIGN AND CONCEPTS DIRECTED HEREIN ARE THE SOLE PROPERTY OF FURR, WEGMAN & BANKS ARCHITECTS, P.A. NO REPRODUCTION, EITHER IN WHOLE OR IN PART, OR ANY PORTION THEREOF, WITHOUT THE WRITTEN PERMISSION OF FURR, WEGMAN & BANKS ARCHITECTS, P.A. IS PERMITTED.

NOT FOR CONSTRUCTION

THIS ITEM HAS BEEN DIGITALLY SIGNED AND SEALED BY DARYL R. HOBSON, P.E. PRINTED COPIES OF THIS DOCUMENT ARE VALID AND THE SIGNATURE MUST BE VERIFIED ON ANY ELECTRONIC COPIES.

DARYL HOBSON
PE #84399

DRAWING IS NOT VALID UNLESS SIGNED, SEALED & DATED BY REGISTERED PROFESSIONAL.

DATE	REVISION DESCRIPTION - THIS SHEET ONLY
01/05/26	ADDENDUM NO. 1

FOUNDATION PLAN
PASCO SHERIFF'S OFFICE
MENTAL PHYSICAL EMOTIONAL HEALTH CENTER

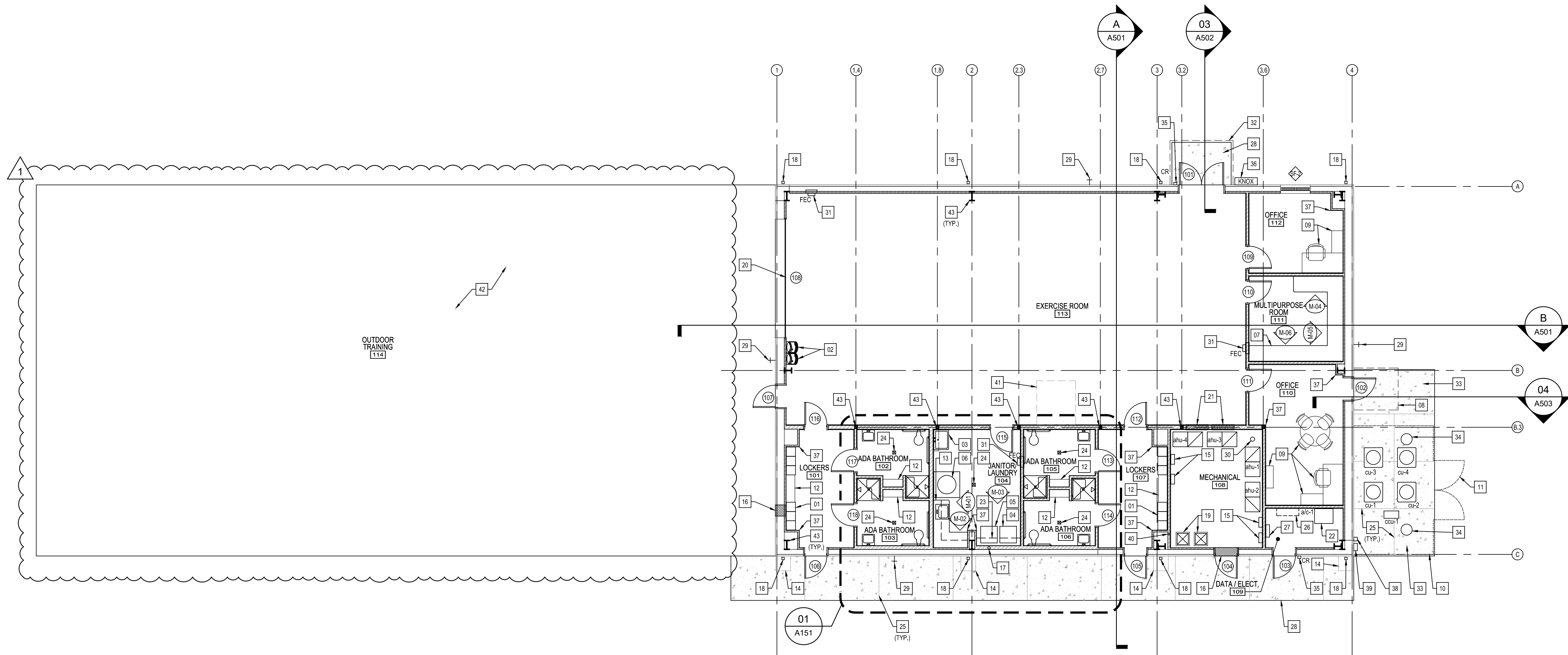
CENTRAL BLVD., BUILDING E
LAND O' LAKES, FL 34657

PHASE: 100% CONSTRUCTION DOCUMENTS

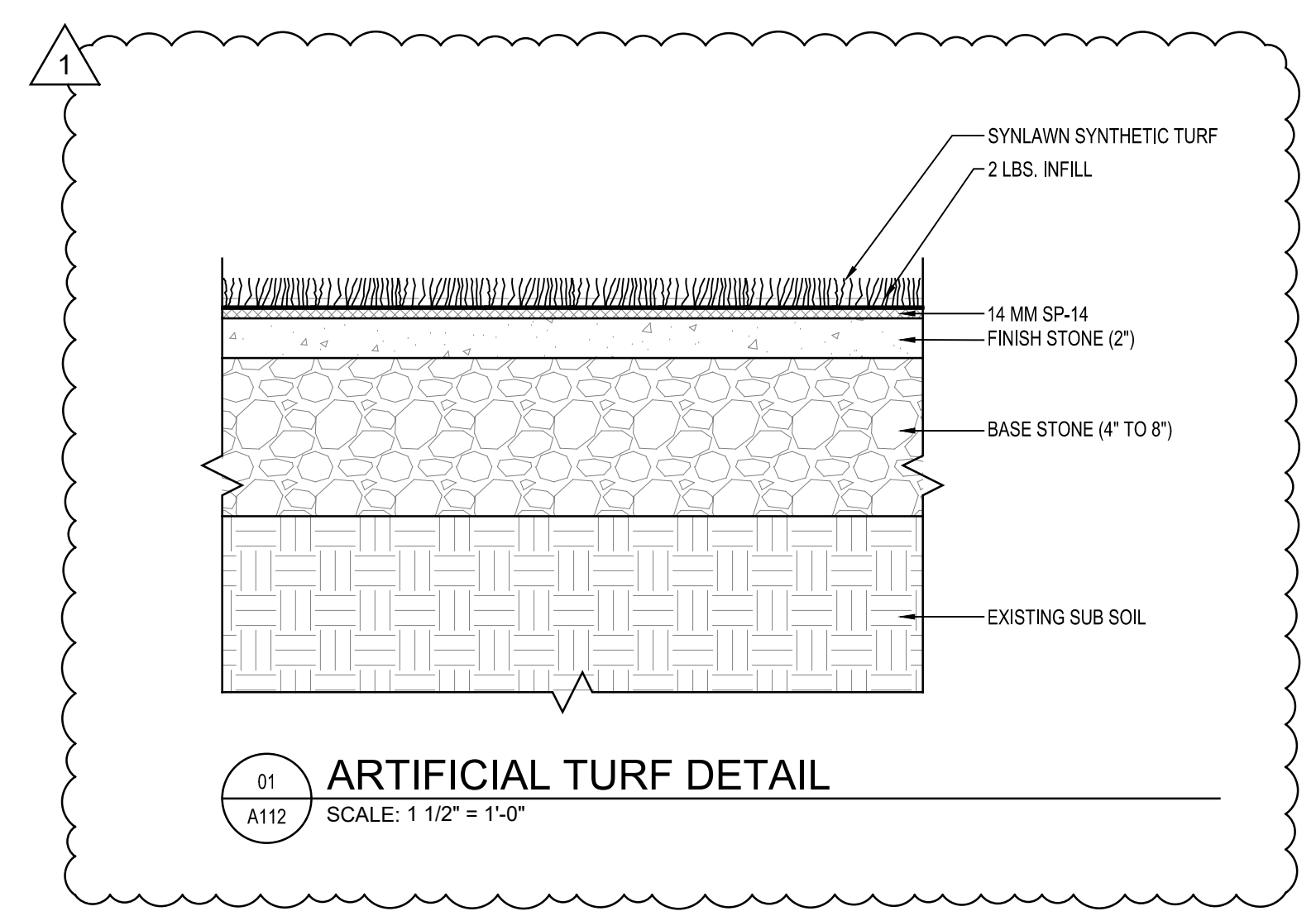
DATE: 08/17/2025

HOBSON STRUCTURAL ENGINEERING - P.A. **HISE**
P.O. BOX 124
LECANTO, FL. 34460

PROJ MGR:	CKD BY:
RMT	DRH
JOB NUMBER:	25-14
SHEET NUMBER:	S1



FIRST FLOOR FINISH PLAN
SCALE: 1/8" = 1'-0"



01 ARTIFICIAL TURF DETAIL
SCALE: 1 1/2" = 1'-0"

- KEYNOTES**
01. 2-TIER 15" x 15" HDPE LOCKERS. SEE SPECIFICATIONS.
 02. HI-LO ELECTRIC WATER COOLER WITH BOTTLE FILLER. SEE PLUMBING DRAWINGS.
 03. MOP SINK. SEE PLUMBING DRAWINGS.
 04. WASHER. PURCHASED BY OWNER. INSTALLED BY CONTRACTOR.
 05. DRYER. PURCHASED BY OWNER. INSTALLED BY CONTRACTOR.
 06. WATER HEATER ON HOUSEKEEPING PAD. SEE PLUMBING DRAWINGS.
 07. BASE CABINET AND COUNTERTOP.
 08. PRE-ENGINEERED PRE-FABRICATED ALUMINUM CANOPY ABOVE WITH TIE-BACKS BY PEMB MANUFACTURER.
 09. FURNITURE / EQUIPMENT BY OWNER.
 10. 6" HIGH HVAC CONDENSATE YARD FENCING (BLACK ALUMINUM PICKET).
 11. 6" HIGH DOUBLE GATE (BLACK ALUMINUM PICKET).
 12. HDPE LOCKER ROOM BENCH WITH LEGS. SEE SPECIFICATIONS.
 13. BASE CABINET AND COUNTERTOP W/ OVERHEAD CABINET.
 14. COLD JOINT AT CONCRETE TO ACCOMMODATE FUTURE DOWNSPOUT REMOVAL AND CAPPING OF UNDERGROUND STORM WATER PIPING.
 15. ELECTRICAL DISCONNECT. SEE ELECTRICAL DRAWINGS.
 16. MECHANICAL LOUVER. SEE MECHANICAL DRAWINGS.
 17. DRYER VENT. SEE MECHANICAL DRAWINGS.
 18. 4" x 4" STEEL DOWNSPOUT WITH FACTORY KYNAR FINISH BY PEMB MANUFACTURER. SEE CIVIL DRAWINGS FOR EXTENT OF STORM WATER COLLECTION SYSTEM.
 19. HVAC SUPPLY AIR DUCTWORK EXTENDING UP TO SECOND LEVEL. SEE MECHANICAL DRAWINGS.
 20. INSULATED OVERHEAD COILING DOOR. SEE SPECIFICATIONS.
 21. RETURN AIR LOUVER. SEE MECHANICAL DRAWINGS.
 22. DATA CABINET. SEE ELECTRICAL DRAWINGS.
 23. OVERHEAD CABINET W/ SHELVING.
 24. FLOOR DRAIN. SEE PLUMBING DRAWINGS.
 25. TYPICAL SAW CUT IN CONCRETE SLAB. SEE STRUCTURAL DRAWINGS.
 26. MINI-SPLIT AIR HANDLER UNIT. SEE MECHANICAL DRAWINGS.
 27. ELECTRICAL PANEL. SEE ELECTRICAL DRAWINGS.
 28. CONCRETE PAD / SIDEWALK.
 29. HOSE BIBB. SEE PLUMBING DRAWINGS.
 30. HVAC CONDENSATE DRAIN. SEE PLUMBING DRAWINGS.
 31. FIRE EXTINGUISHER WITHIN SEMI-RECESSED CABINET.
 32. SUSPENDED ALUMINUM CANOPY SYSTEM ABOVE BY PERFECTION ARCHITECTURAL SYSTEMS, LLC OR EQUAL. BLACK FINISH.
 33. 4" CONCRETE PAD WITH 6"x6" W2.1xW2.1 WELDED WIRE MESH FOR HVAC CONDENSATE YARD & ENTRANCE SIDEWALK. FINAL SIZE TO BE COORDINATED WITH CONTRACTOR.
 34. DRYWELL. SEE PLUMBING DRAWINGS.
 35. CARD READER. SEE ELECTRICAL DRAWINGS.
 36. KNOX BOX. COORDINATE LOCATION AND MODEL NUMBER WITH FIRE DEPARTMENT.
 37. CORNER GUARD BY INPRO. COLOR: WHITE.
 38. ELECTRICAL METER. SEE ELECTRICAL DRAWINGS.
 39. ELECTRICAL DISCONNECT. SEE ELECTRICAL DRAWINGS.
 40. PLUMBING VENT STACK. SEE PLUMBING DRAWINGS.
 41. 3" RECESS IN SLAB FOR FUTURE LIFT TO STORAGE PLATFORM. SEE STRUCTURAL DRAWINGS.
 42. ARTIFICIAL TURF. SEE DETAIL 01/A112.
 43. STEEL PEMB STRUCTURAL COLUMN BY PEMB MANUFACTURER.

FINISH SCHEDULE LEGEND

ABBREVIATION	DESCRIPTION
FLOOR	
T	TILE
SC	SEALED CONCRETE
LVP	LUXURY VINYL PLANK
JAR	ATHLETIC RUBBER
BASE	
T	TILE
R	RUBBER-4" STANDARD COVE BASE
WALLS	
GP	GYPSUM BOARD PAINTED - USE MOISTURE RESISTANT AT TOILET ROOMS AND JANITOR ROOMS
T	TILE
M	METAL WALL PANEL (EXTERIOR WALL)
CEILING	
ACT	2'x2' LAY IN ACOUSTICAL TILE & SUSPENDED GRID
GP	GYPSUM BOARD PAINTED
EX	EXPOSED STRUCTURE

ROOM FINISH SCHEDULE (FIRST FLOOR)

ROOM NO.	ROOM NAME	FLOOR	BASE	WALLS				CEILING		NOTES
				N	S	E	W	MATL	HGT	
101	LOCKERS	T	T	GP	GP	GP	GP	ACT	8'-0"	--
102	ADA BATHROOM	T	T	T	T	T	T	GP	8'-0"	--
103	ADA BATHROOM	T	T	T	T	T	T	GP	8'-0"	--
104	JANITORY/LAUNDRY	T	T	GP	GP	GP	GP	ACT	8'-0"	--
105	ADA BATHROOM	T	T	T	T	T	T	GP	8'-0"	--
106	ADA BATHROOM	T	T	T	T	T	T	GP	8'-0"	--
107	LOCKERS	T	T	GP	GP	GP	GP	ACT	8'-0"	--
108	MECHANICAL	SC	R	GP	GP	GP	GP	EX	--	--
109	DATA/ELECT.	SC	R	GP	GP	GP	GP	ACT	8'-0"	--
110	OFFICE	LVP	R	GP	GP	GP	GP	ACT	8'-0"	--
111	MULTIPURPOSE ROOM	LVP	R	GP	GP	GP	GP	ACT	10'-0"	--
112	OFFICE	LVP	R	GP	GP	GP	GP	ACT	10'-0"	--
113	EXERCISE ROOM	AR	R	GP	GP	GP	GP	EX	--	--
114	OUTDOOR TRAINING	SC	--	--	--	M	--	--	--	--

Furr, Wegman & Banks
Architects, P.A. AR96865

625 EAST ORANGE ST.
LAKELAND, FL 33801

E-MAIL: INFO@FWBARCHITECTS.COM
WWW.FWBARCHITECTS.COM

PH: 863.688.1211

NOT FOR CONSTRUCTION

REVISION DESCRIPTION - THIS SHEET ONLY	DATE
1 01/05/26 ADDENDUM NO. 01	
2	
3	
4	
5	
6	
7	

FIRST FLOOR FINISH PLAN
PASCO SHERIFF'S OFFICE
MENTAL PHYSICAL EMOTIONAL HEALTH CENTER

PROJ MGR: CRG CKD BY: PDW

JOB NUMBER: 25-14

SHEET NUMBER: **A112**

CENTRAL BLVD., BUILDING E
LAND O' LAKES, FL 34657

DATE: 09/17/2025

PHASE: 100% CONSTRUCTION DOCUMENTS